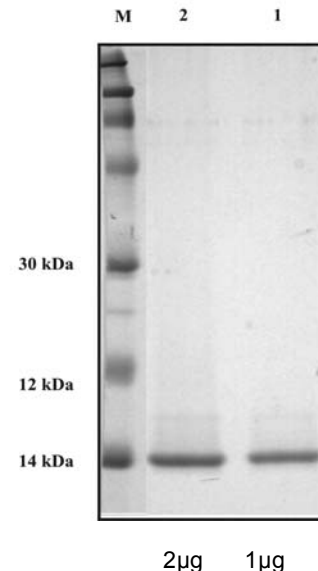




## Recombinant Bet v 2

### Product Code: RE-BV2

Allergen:	rBet v 2 ( <i>Betula verrucosa</i> , allergen 2)
Lot No:	xxxx
Source:	<i>E coli</i>
Mol. Wt:	~14kD (according to sequence from database, initial Methionine included)
Purification:	Affinity Chromatography on Poly-L-Proline and Ion Exchange. Purity > 90 % by SDS-PAGE
Concentration:	2.0 mg/ml
Mol. Ext. Coeff.:	116,938; 1mg/ml A276 = 1.19
Formulation:	Preservative-free and carrier-free in 10mM Phosphate buffer, pH 7.2
Storage:	Store at -20°C
Notes:	Endotoxin: <5EU/mg protein by LAL assay



### **For Research Use Only: Not for Diagnostic or Therapeutic Use**

#### REFERENCES:

1. Valenta R, Duchene M, Pettenburger K, Sillaber C, Valent P, Bettelheim P, Breitenbach M, Rumpold H, Kraft D, Scheiner O. Identification of profilin as a novel pollen allergen: IgE autoreactivity in sensitized individuals. *Science*. 1991;253:557-60.
2. Susani M, Jertschin P, Dolecek C, Sperr WR, Valent P, Ebner C, Kraft D, Valenta R, Scheiner O. High level expression of birch pollen profilin (Bet v 2) in *Escherichia coli*: purification and characterization of the recombinant allergen. *Biochem Biophys Res Commun*. 1995;215:250-63.
3. Ferreira FD, Mayer P, Sperr WR, Valent P, Seiberler S, Ebner C, Liehl E, Scheiner O, Kraft D, Valenta R. Induction of IgE antibodies with predefined specificity in rhesus monkeys with recombinant birch pollen allergens, Bet v 1 and Bet v 2. *J Allergy Clin Immunol*. 1996;97:95-103.