

Recombinant Phl p 2

Product Code: RE-PP2

Allergen: rPhl p 2 (*Phleum pratense* allergen 2)

Lot No: xxxx

Source: *E coli*

Mol. Wt: ~10kD (signal peptide removed and substituted by a Methionine)

Purification: Hydrophobic Interaction and Ion Exchange Chromatography
Purity > 95 % by SDS-PAGE

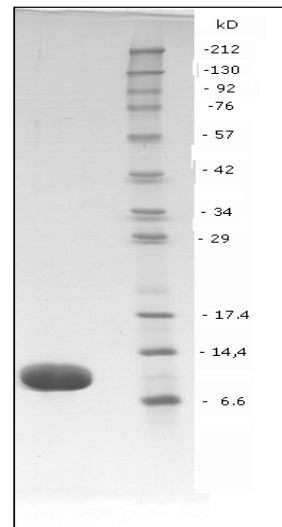
Concentration: 2.0 mg/ml

Mol. Ext. Coeff.: 10,295; 1mg/ml A276 = 0.59

Formulation: Preservative-free and carrier-free in 10mM Phosphate buffer, pH 7.2

Storage: Store at -20°C

Notes: Not tested for endotoxin.



For Research Use Only: Not for Diagnostic or Therapeutic Use

REFERENCES:

1. Dolecek C, Vrtala S, Laffer S, Steinberger P, Kraft D, Scheiner O, Valenta R. Molecular characterization of Phl p 2, a major timothy grass (*Phleum pratense*) pollen allergen. FEBS Lett. 1993;335:299-304.
2. De Marino S, Morelli MA, Fraternali F, Tamborini E, Musco G, Vrtala S, Dolecek C, Arosio P, Valenta R, Pastore A. An immunoglobulin-like fold in a major plant allergen: the solution structure of Phl p 2 from timothy grass pollen. Structure Fold Des. 1999;7:943-52.
3. Mari A. Skin test with a timothy grass (*Phleum pratense*) pollen extract vs. IgE to a timothy extract vs. IgE to rPhl p 1, rPhl p 2, nPhl p 4, rPhl p 5, rPhl p 6, rPhl p 7, rPhl p 11, and rPhl p 12: epidemiological and diagnostic data. Clin Exp Allergy 2003;33:43-51.